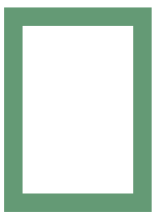


長耀建設士林區光華段- 設計簡報





量體計畫(26F/B6)

構造：SC (鋼骨構造)

樓層：1F、2F

內容：大廳、店面、管委會

樓高：4.2M(+0.3M)、2F=4.0M

戶數：5戶(店面)

樓層：3~26F

內容：住宅

樓高：3.5M

戶數：192戶

建築物高度: 92.50m (+0.3M)

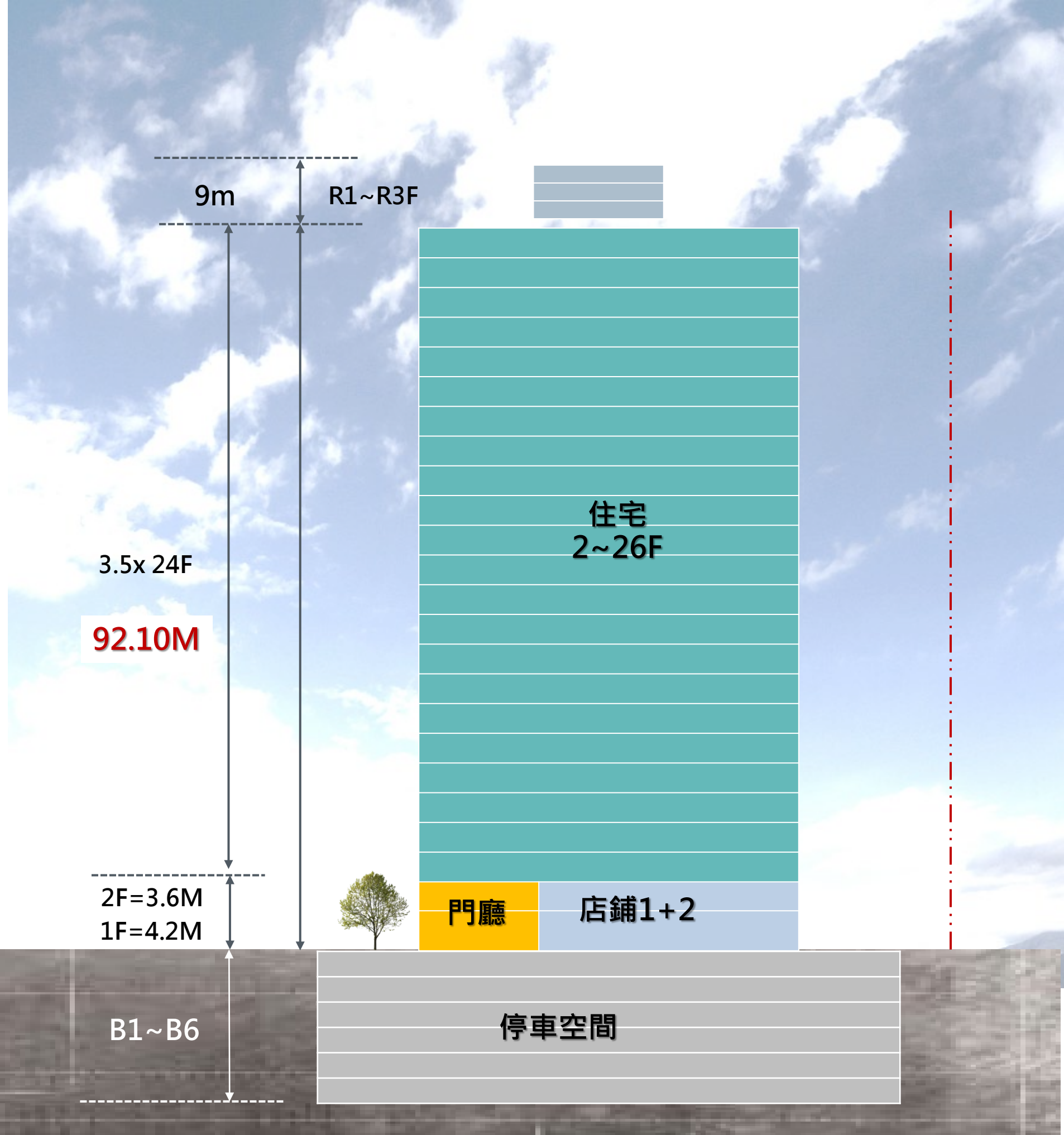
全案合計：197戶

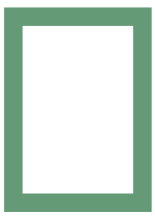
樓層：B1~B6F

內容：停車空間、設備空間

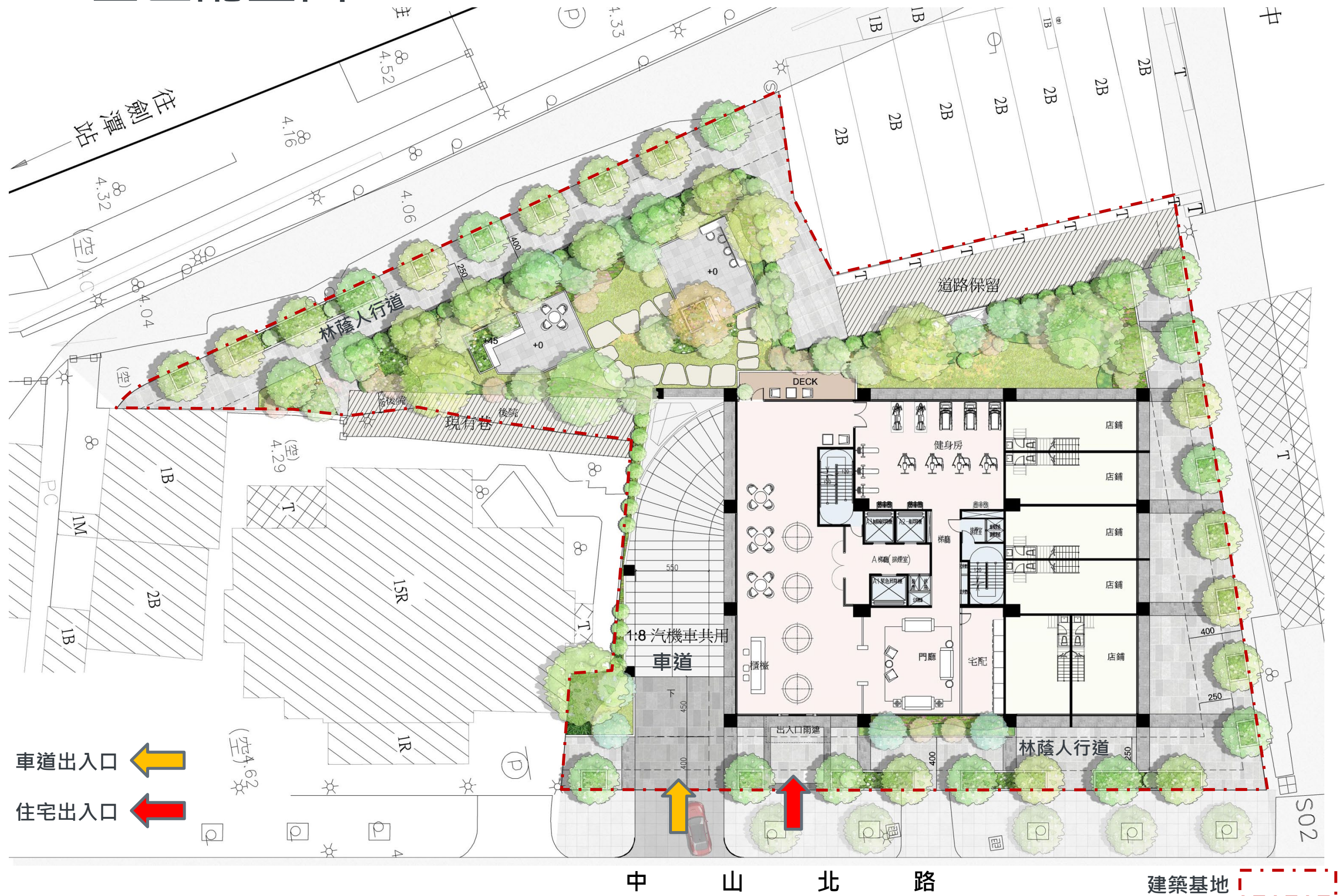
樓高：B1=4.8M

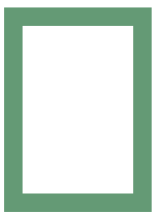
B2~B6=各層3.2M



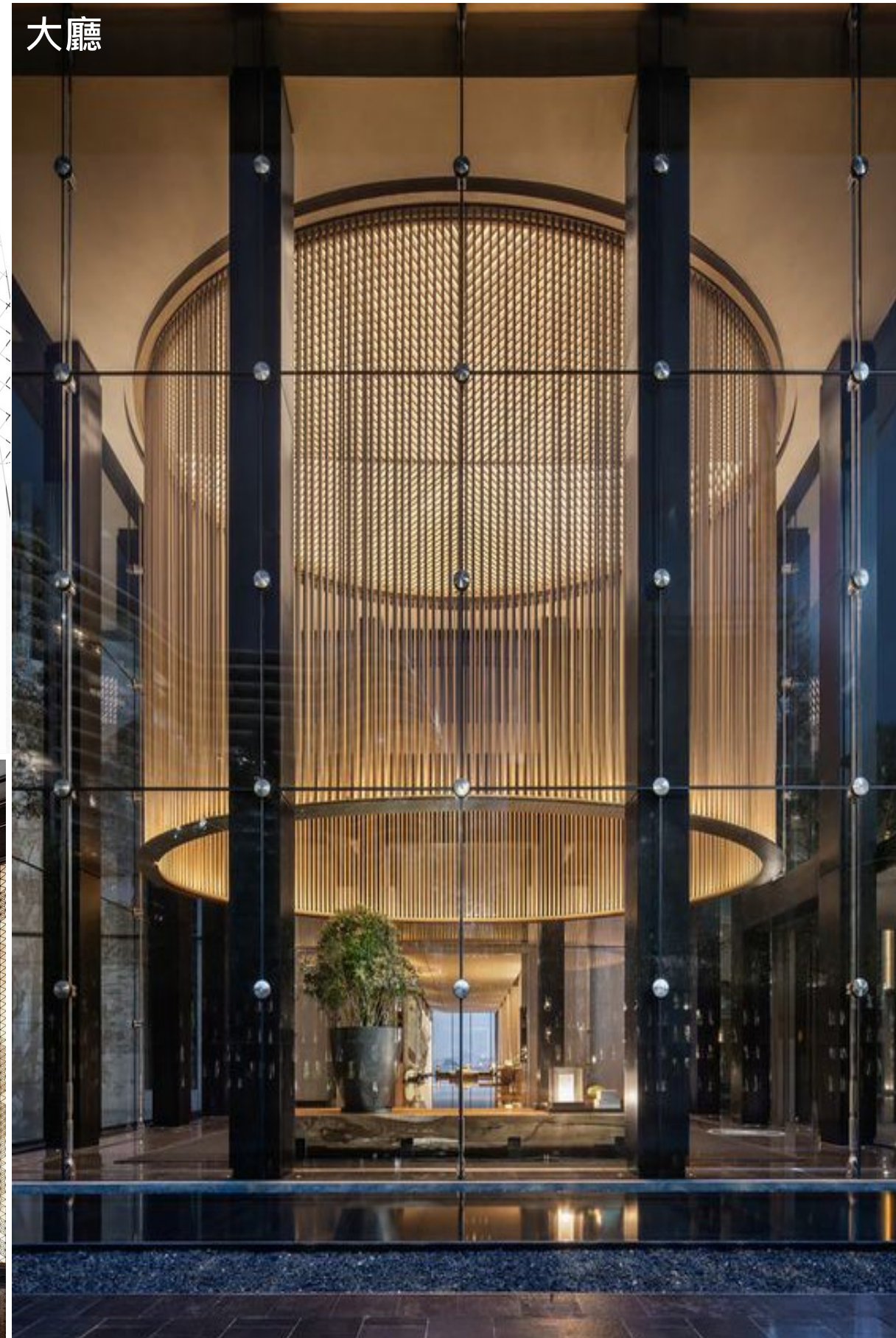
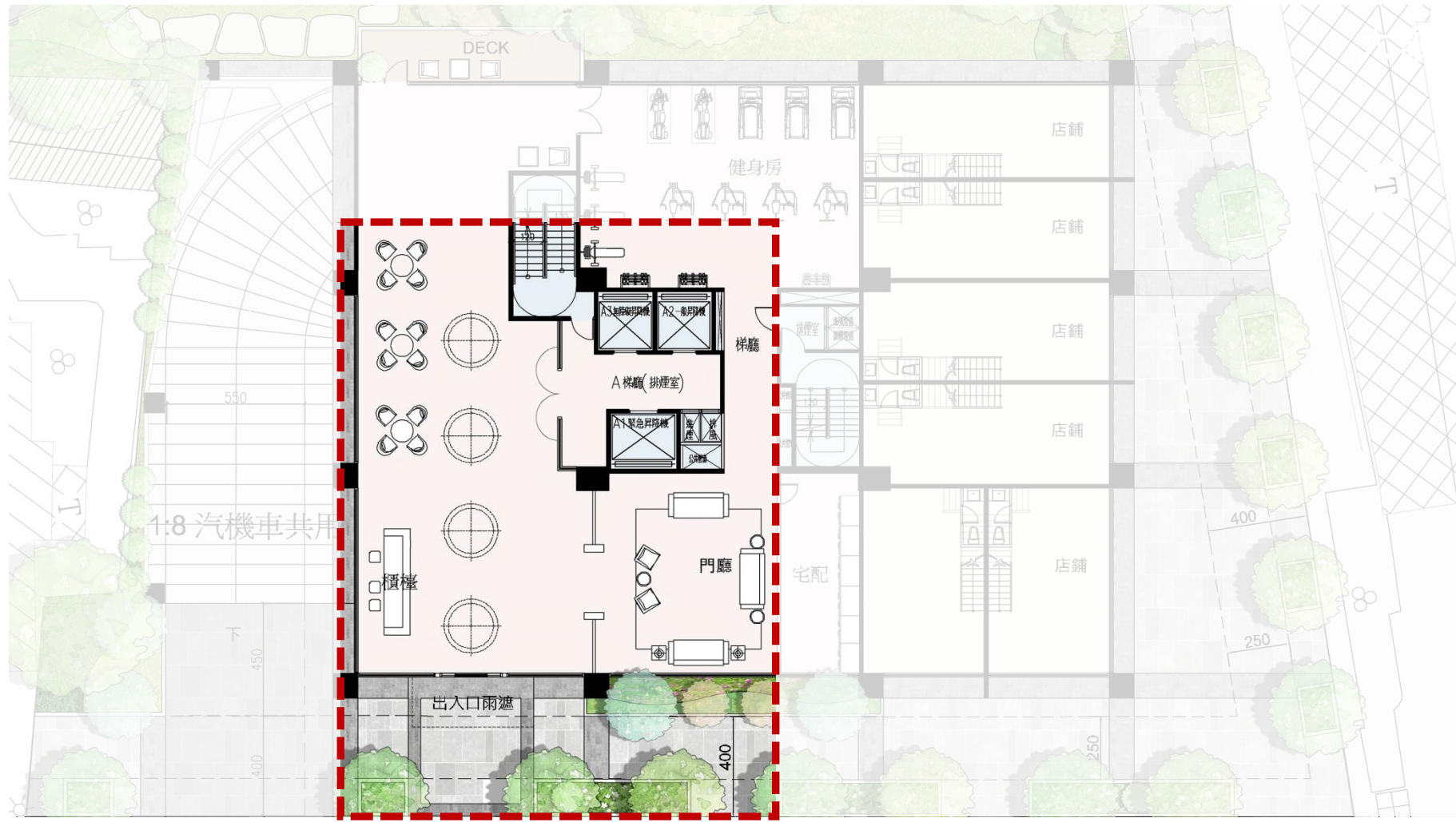


1F-全區配置圖

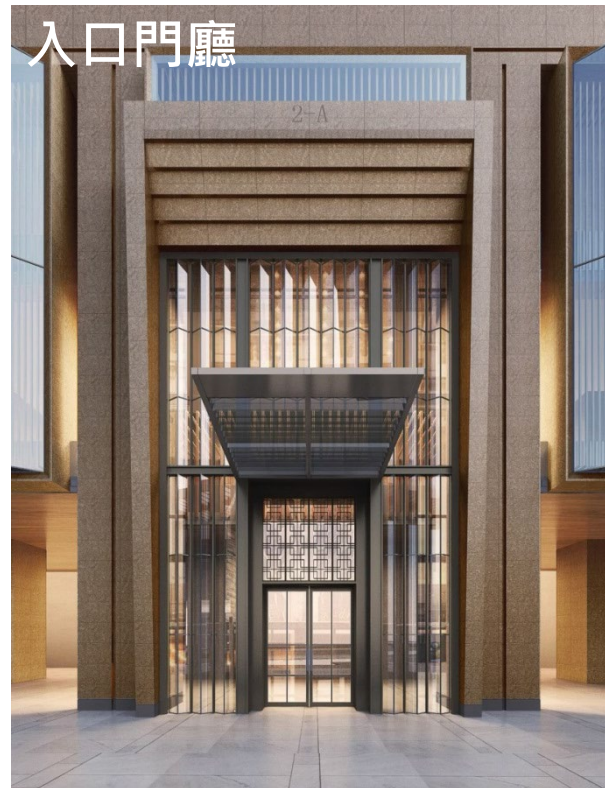




門廳意象



大廳



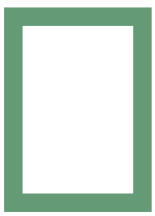
入口門廳



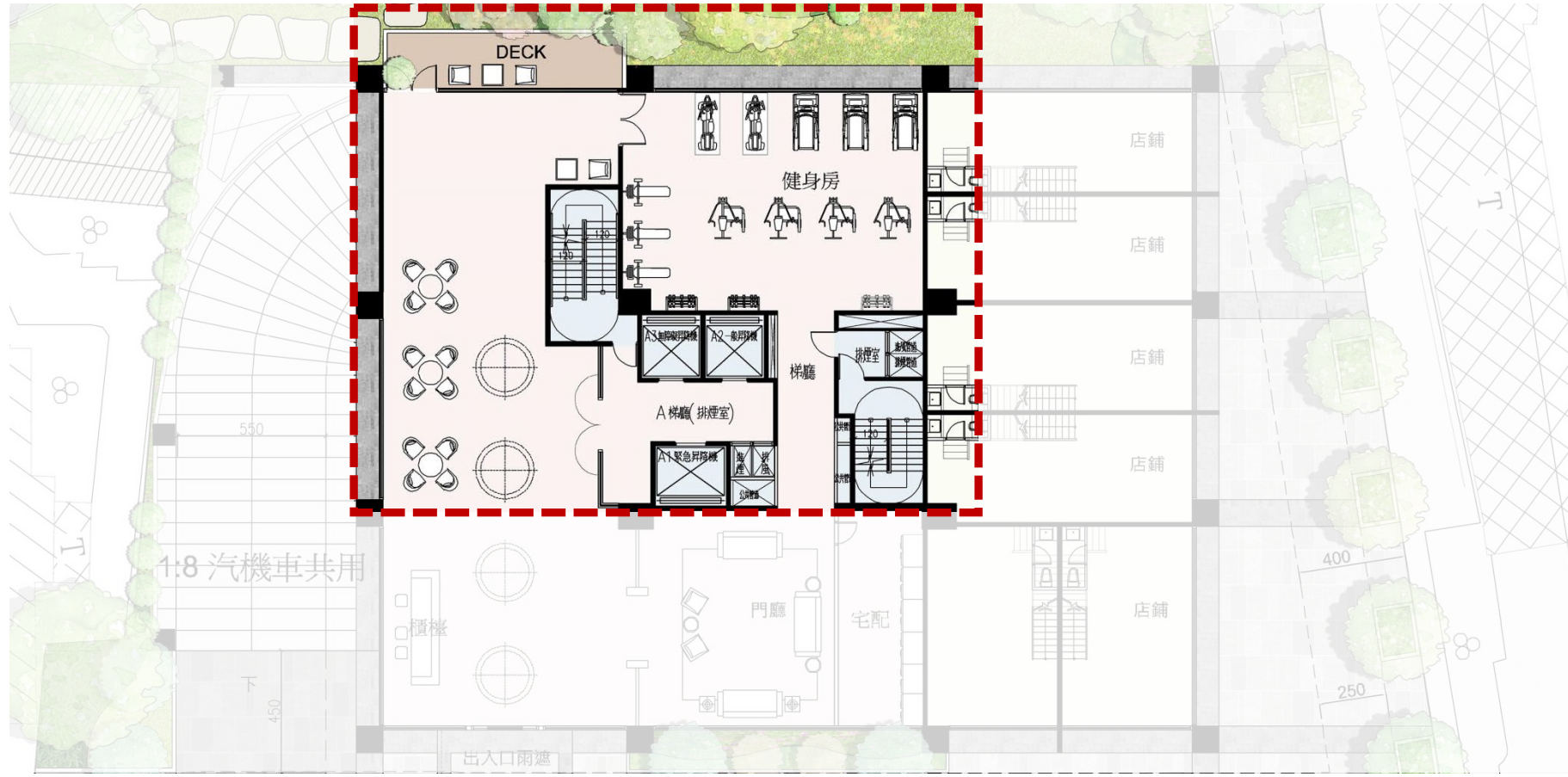
接待區



櫃檯



公設構想



沙發區

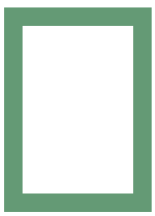


健身房



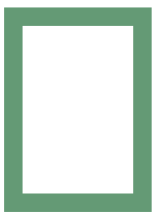
吧檯



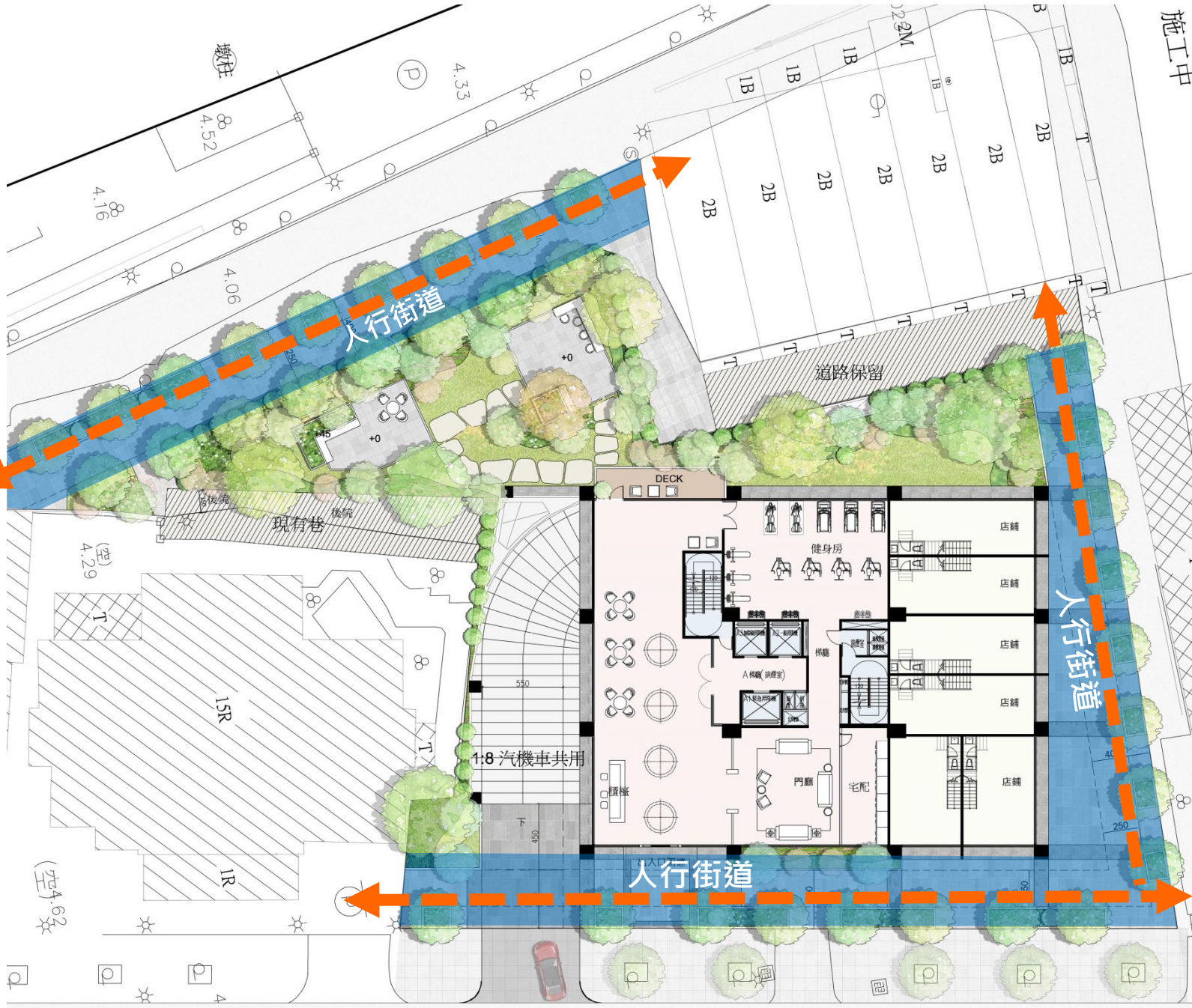


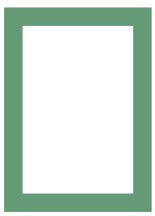
景觀中庭



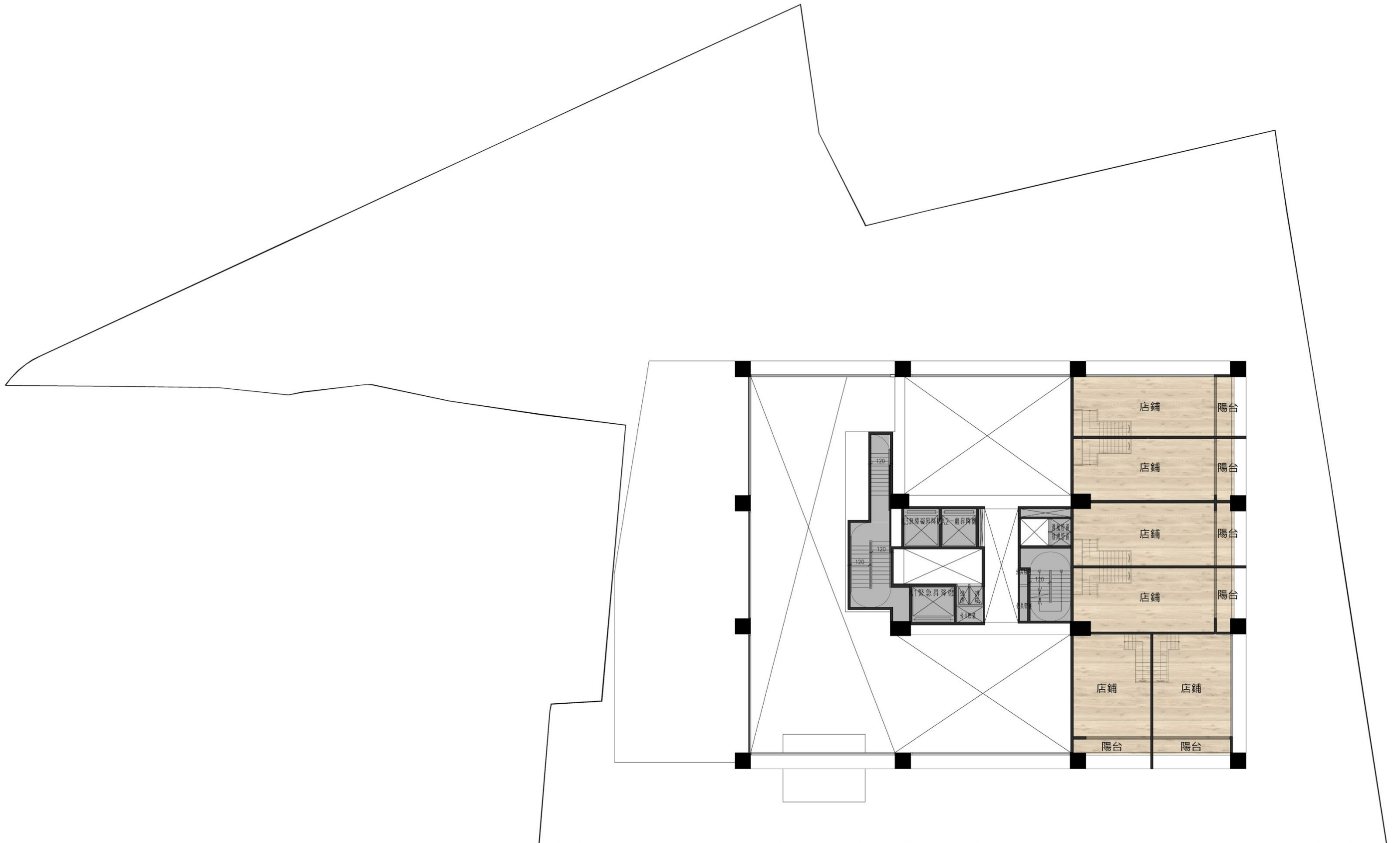


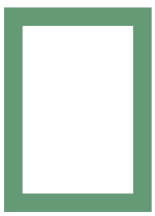
林蔭人行街道綠化





二層平面圖





綠意生活 ~ 降溫城市

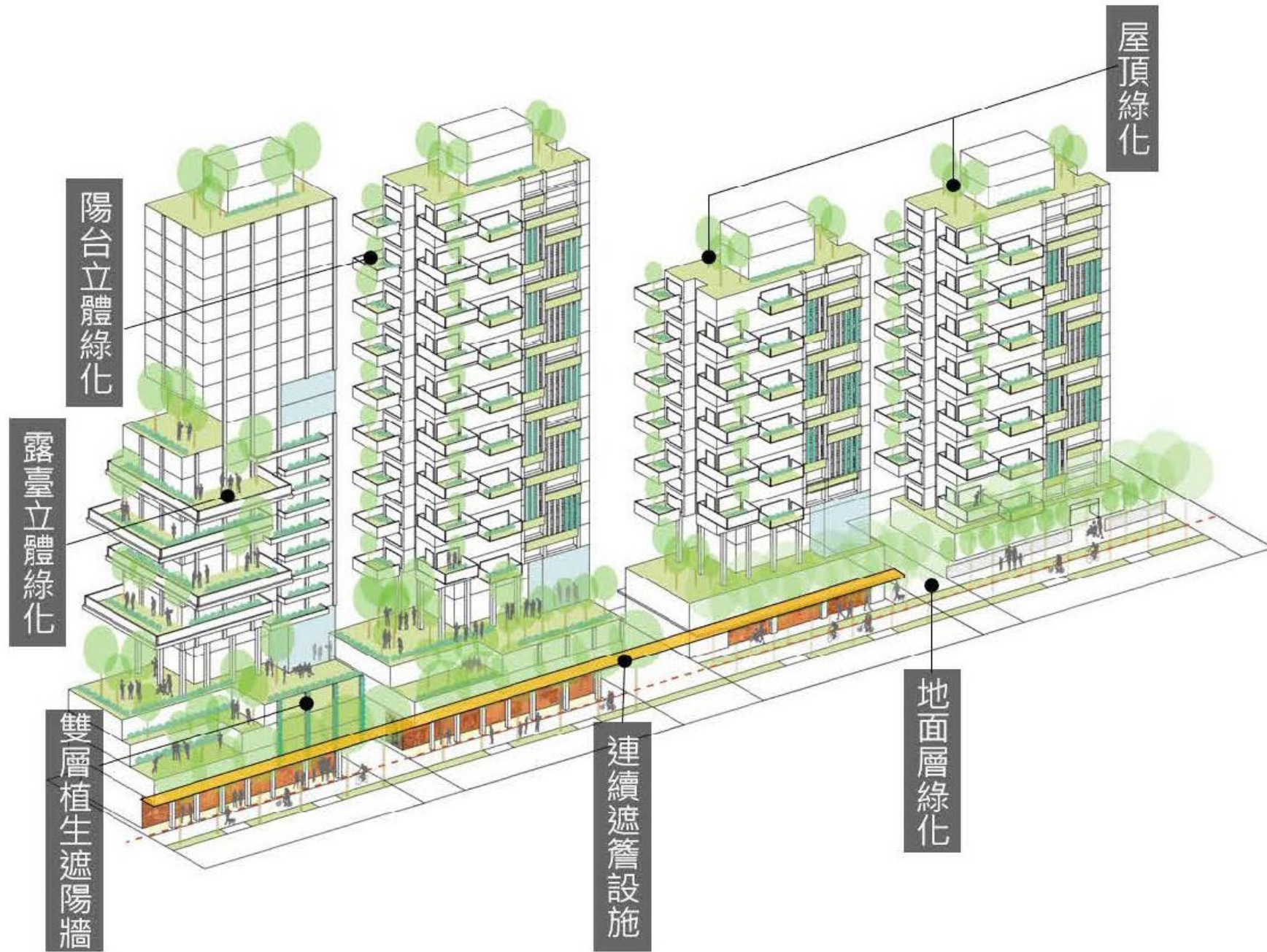
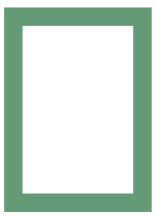


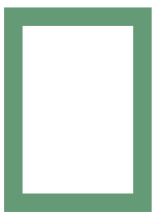
圖5 開發基地體感降溫之建築設計構想



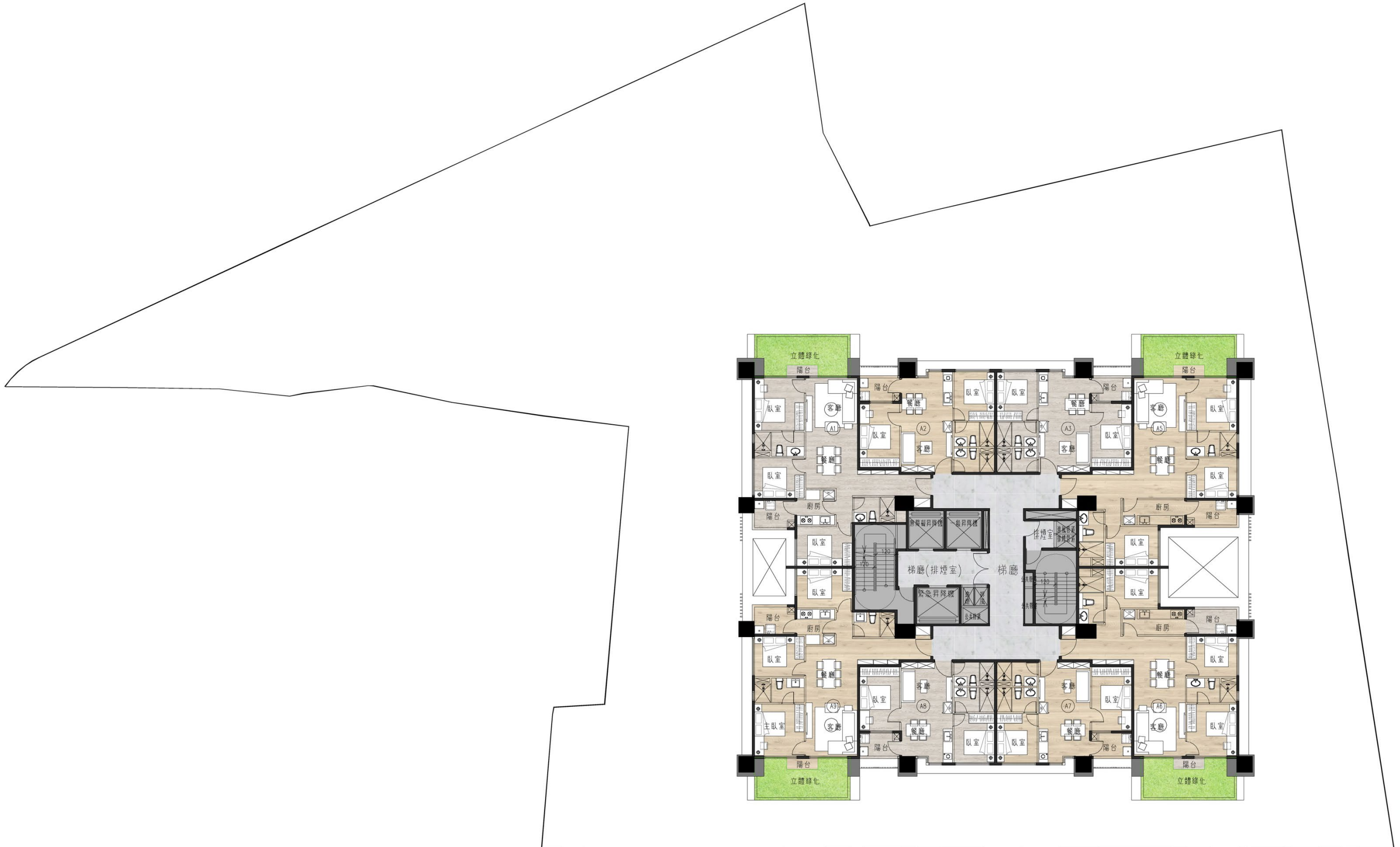


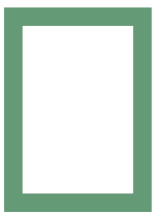
降溫城市~綠意生活



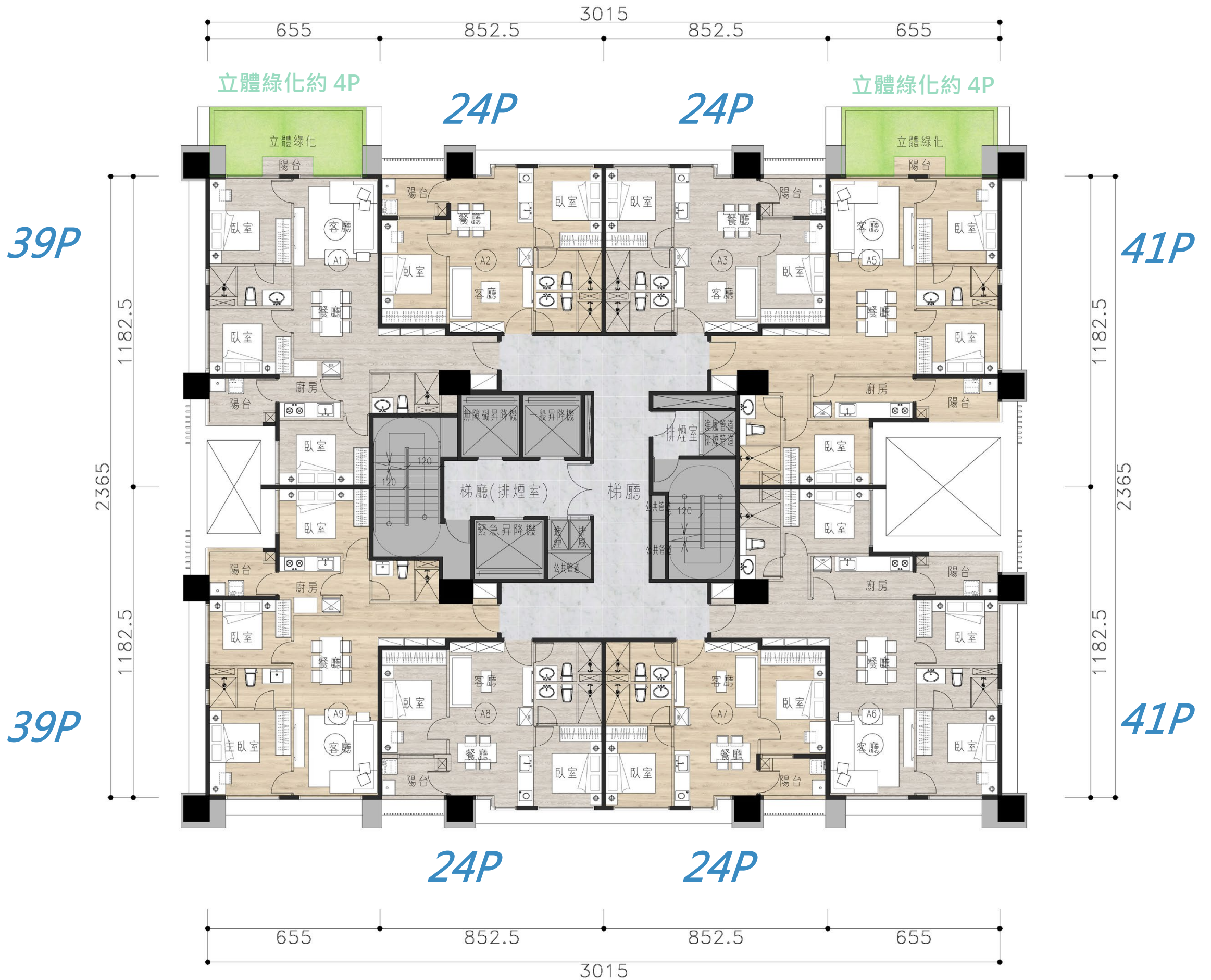


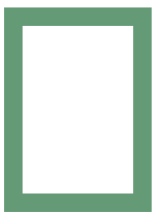
標準層方案 3F~26F



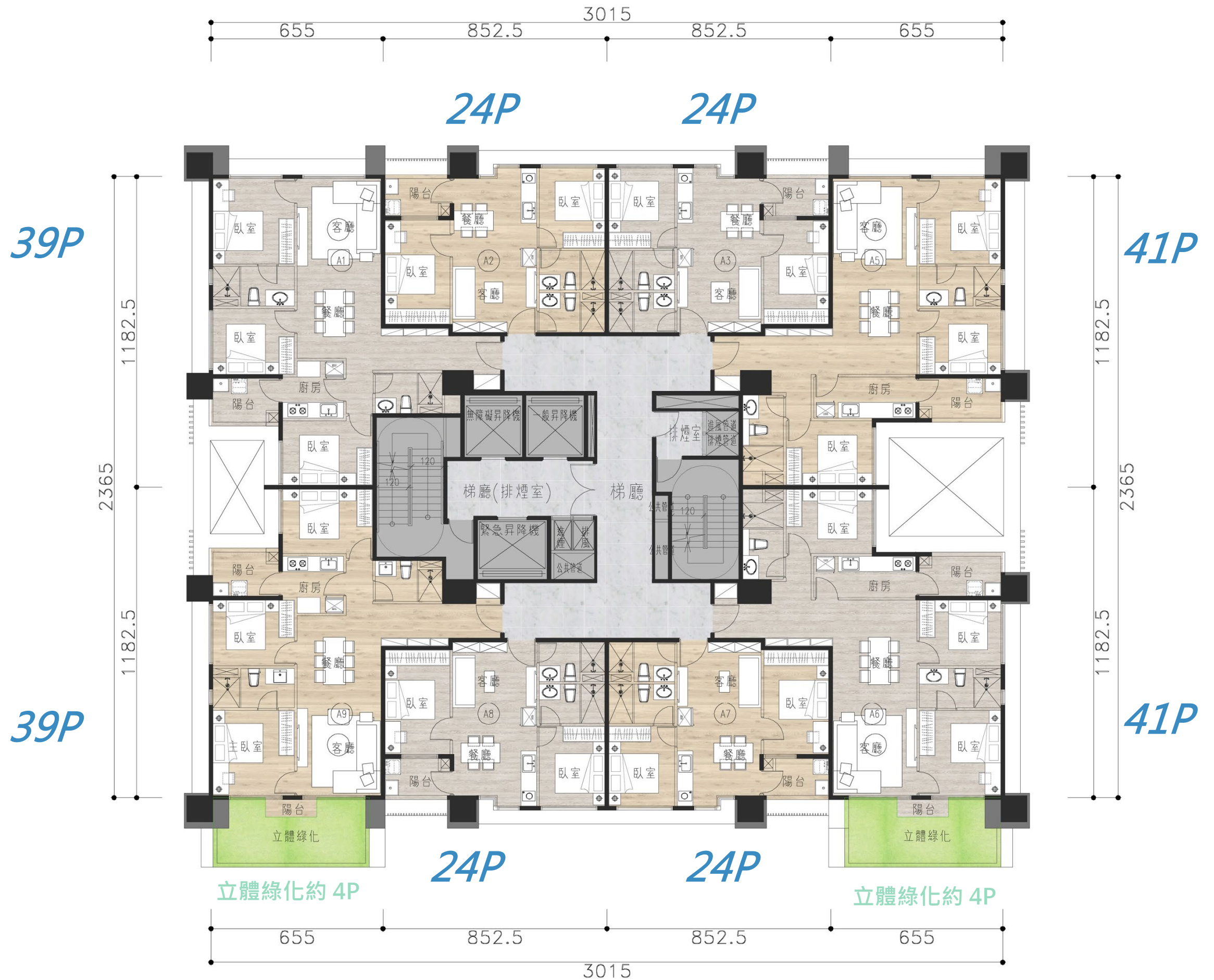


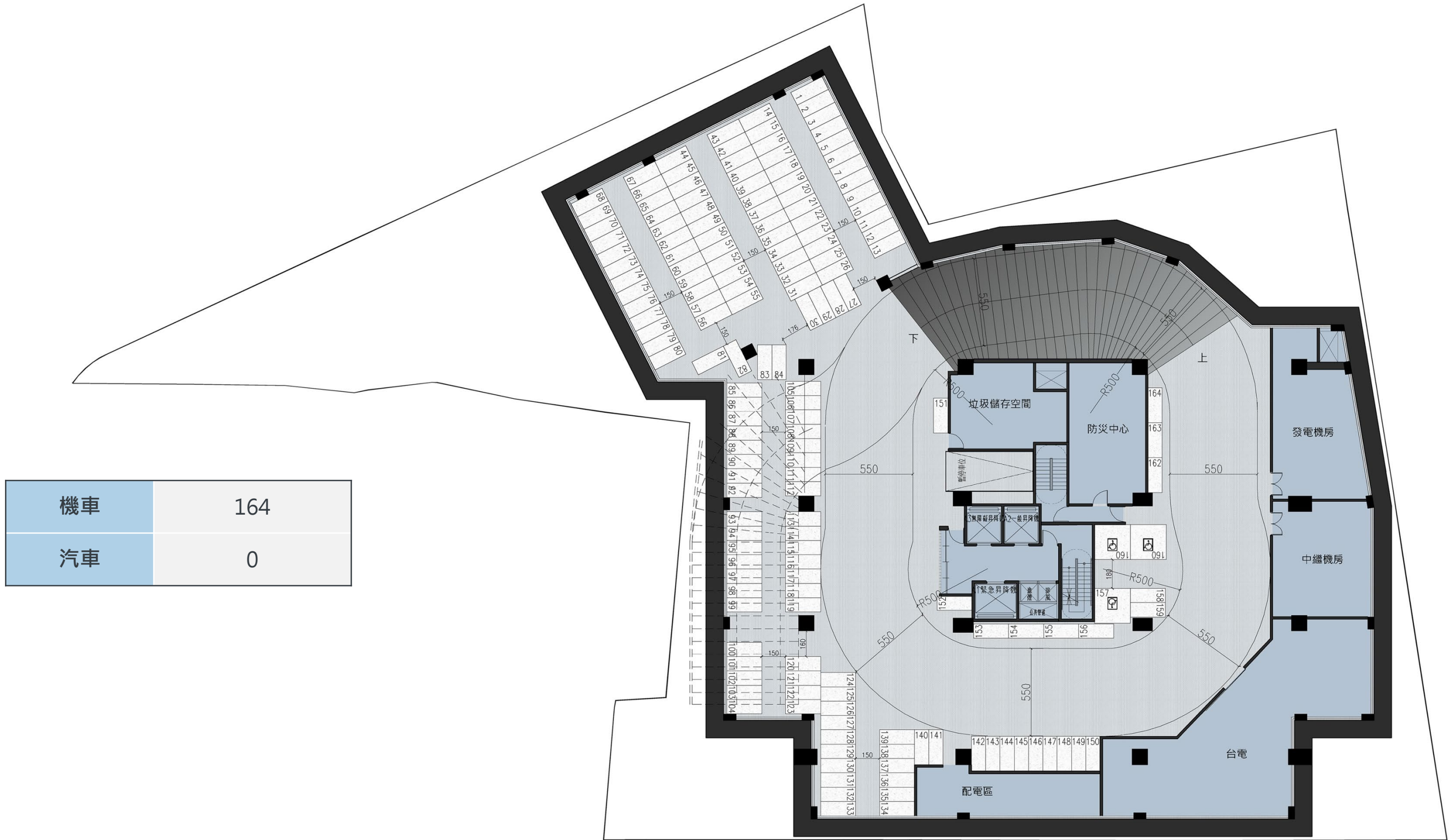
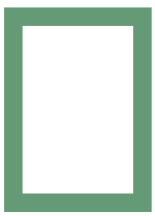
標準層方案
奇數層



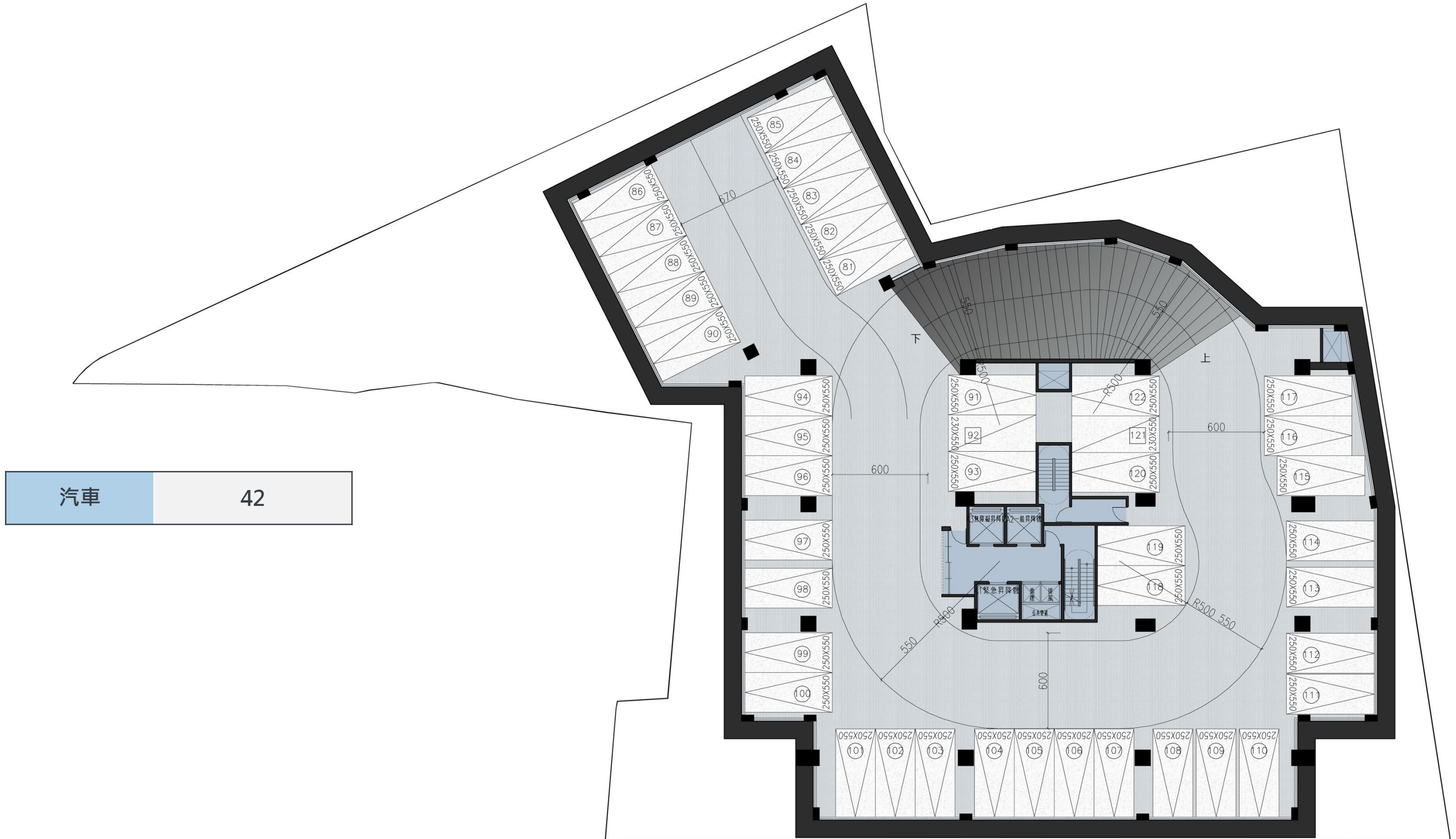
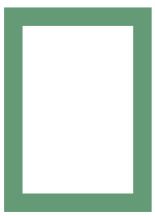


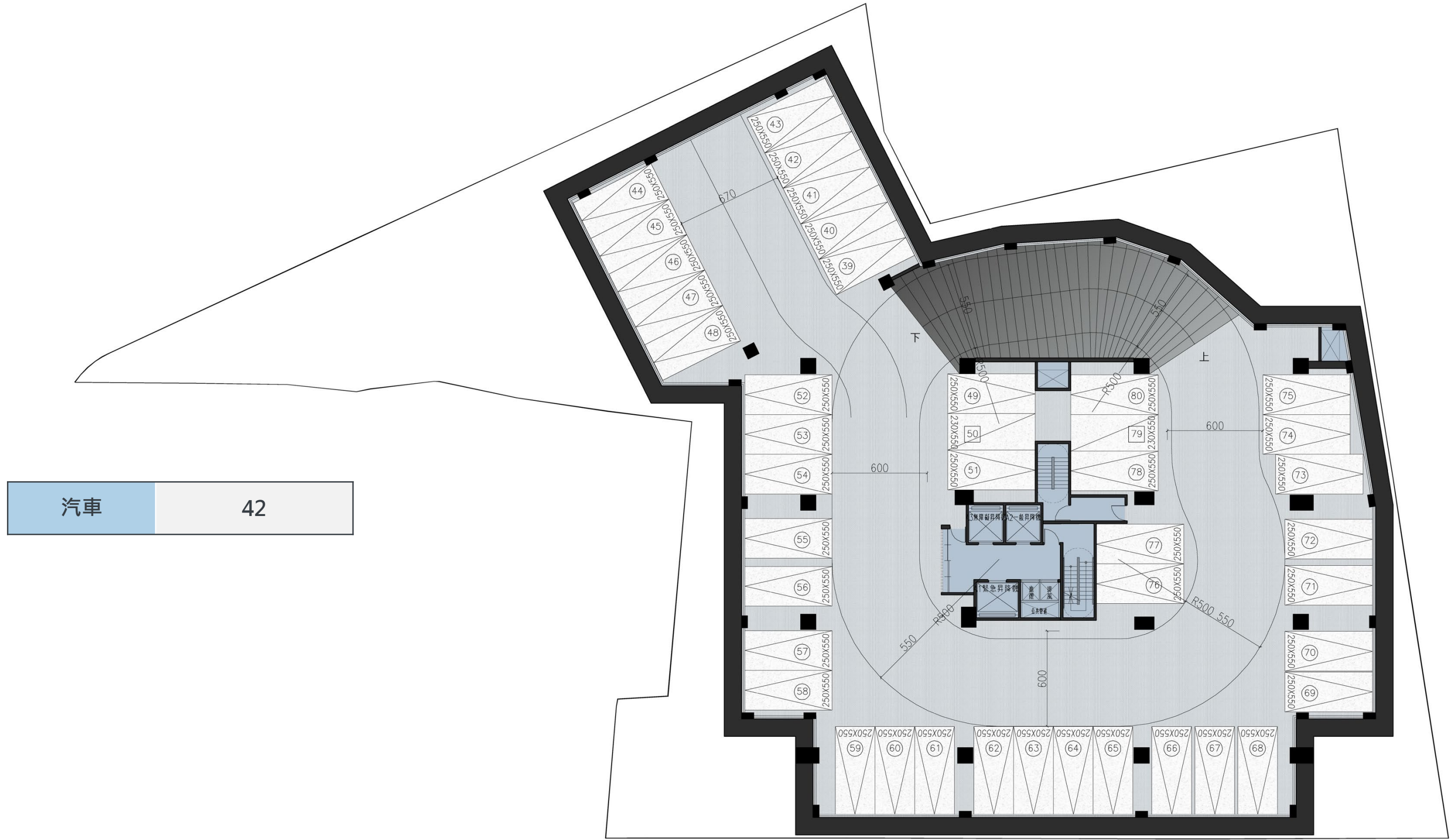
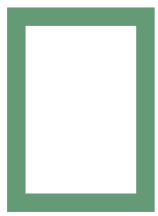
標準層方案
偶數層

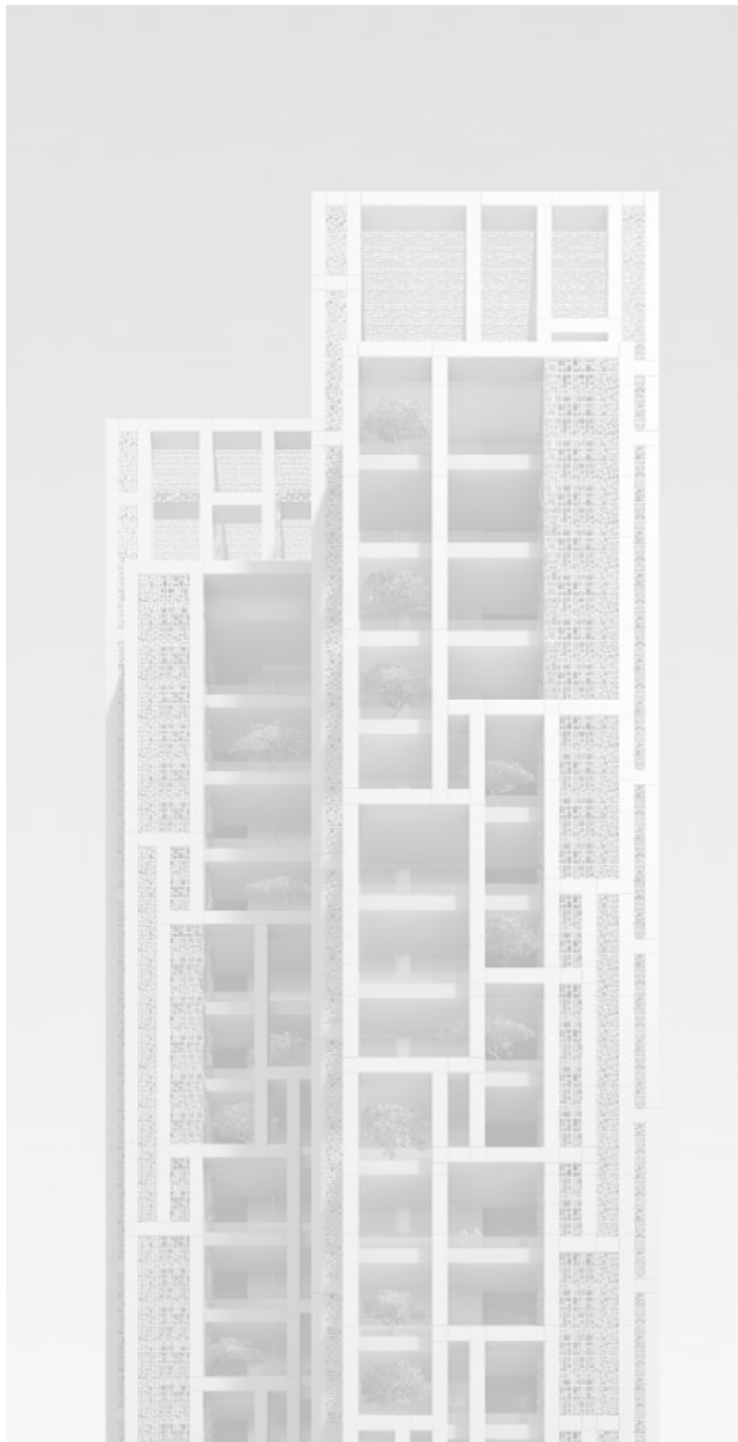




機車	164
汽車	0

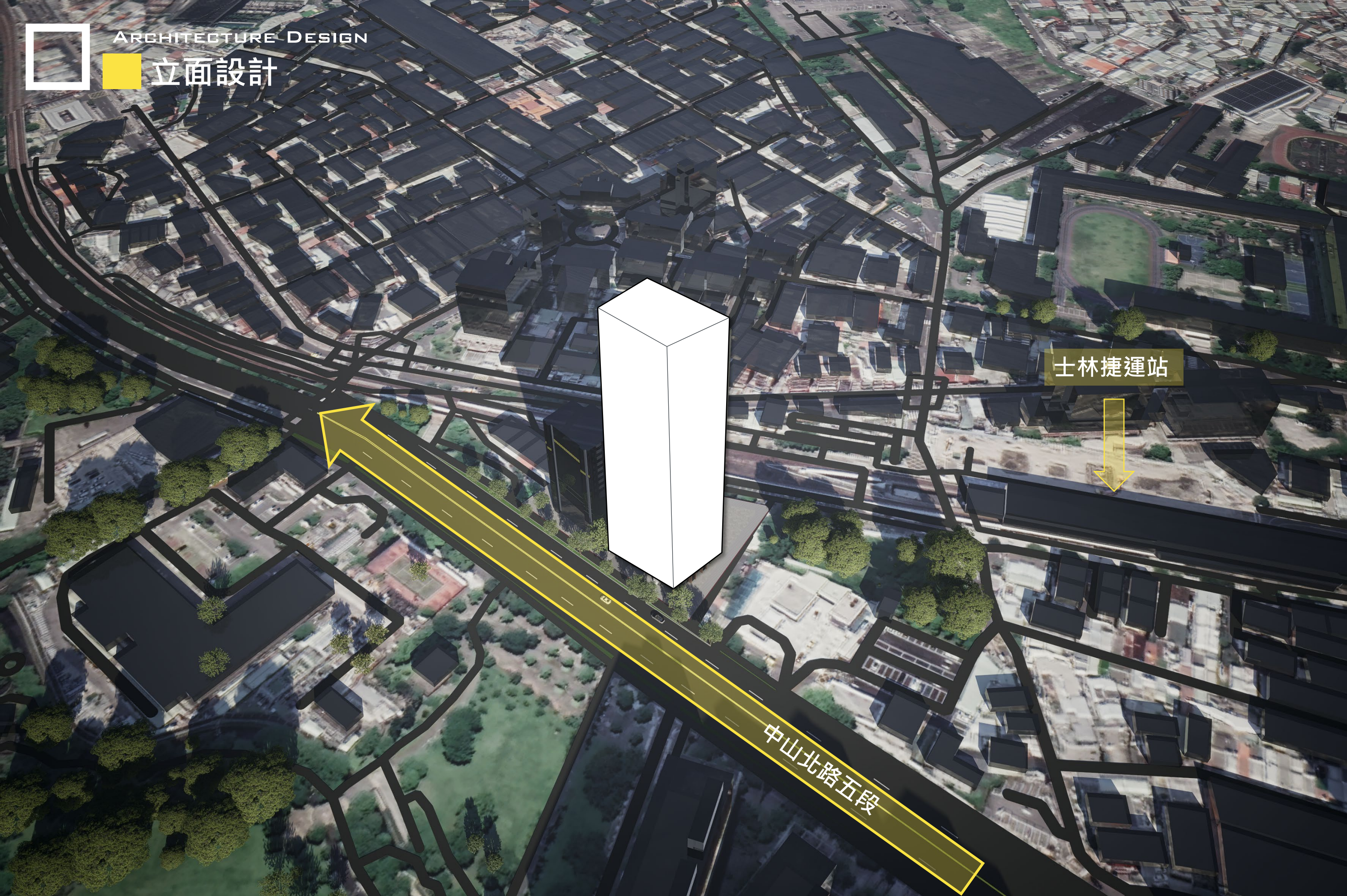






ELEVATION DESIGN





士林捷運站

中山北路五段



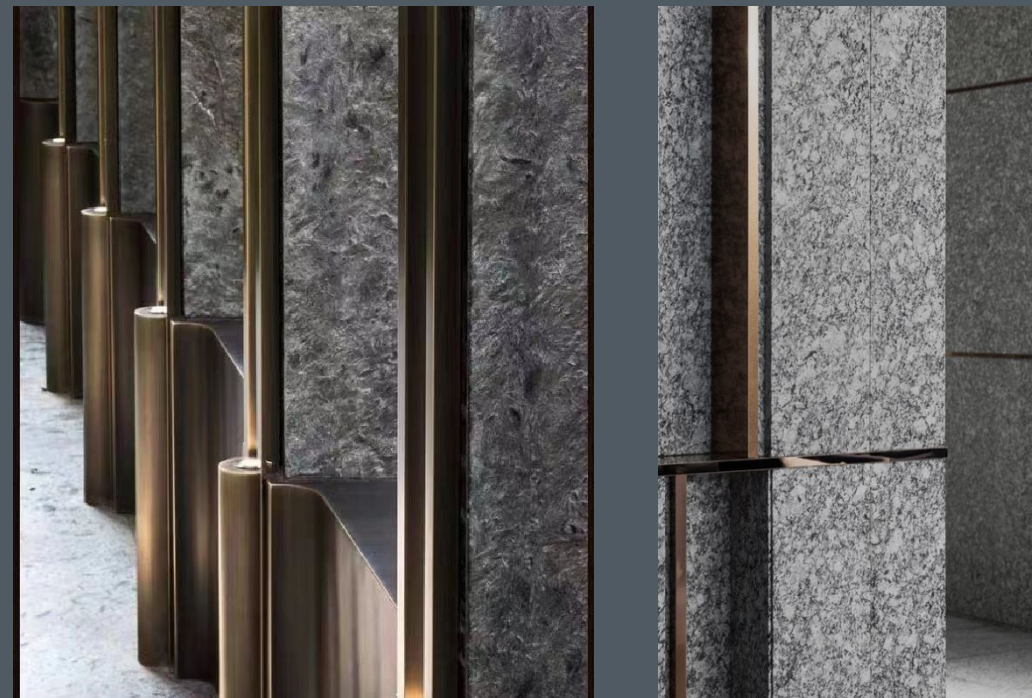
ARCHITECTURE DESIGN



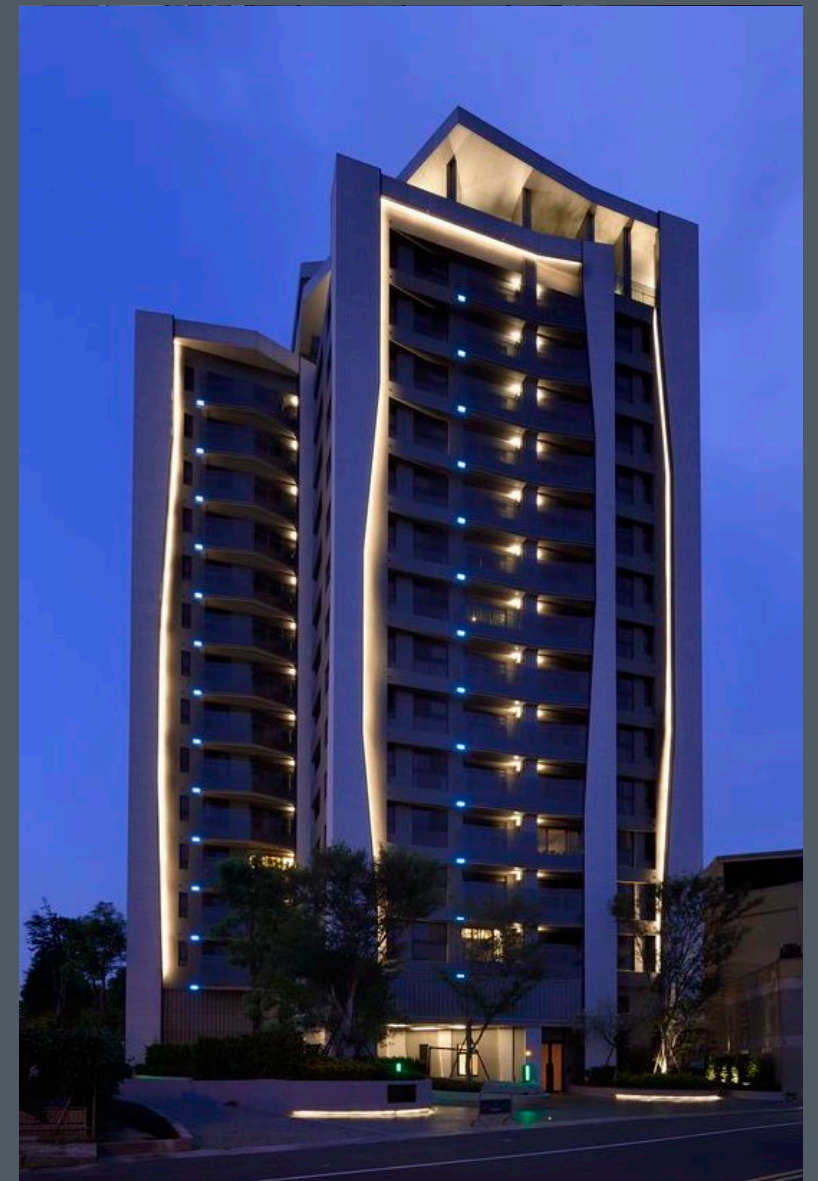
INSPIRATION

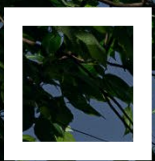


DARK GRANITE



ANTIQUE COPPER







ARCHITECTURE DESIGN



立面設計













ARCHITECTURE DESIGN



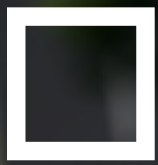
立面設計





















簡報結束
謝謝指教

C.C.J

ARCHITECTS & ASSOCIATES